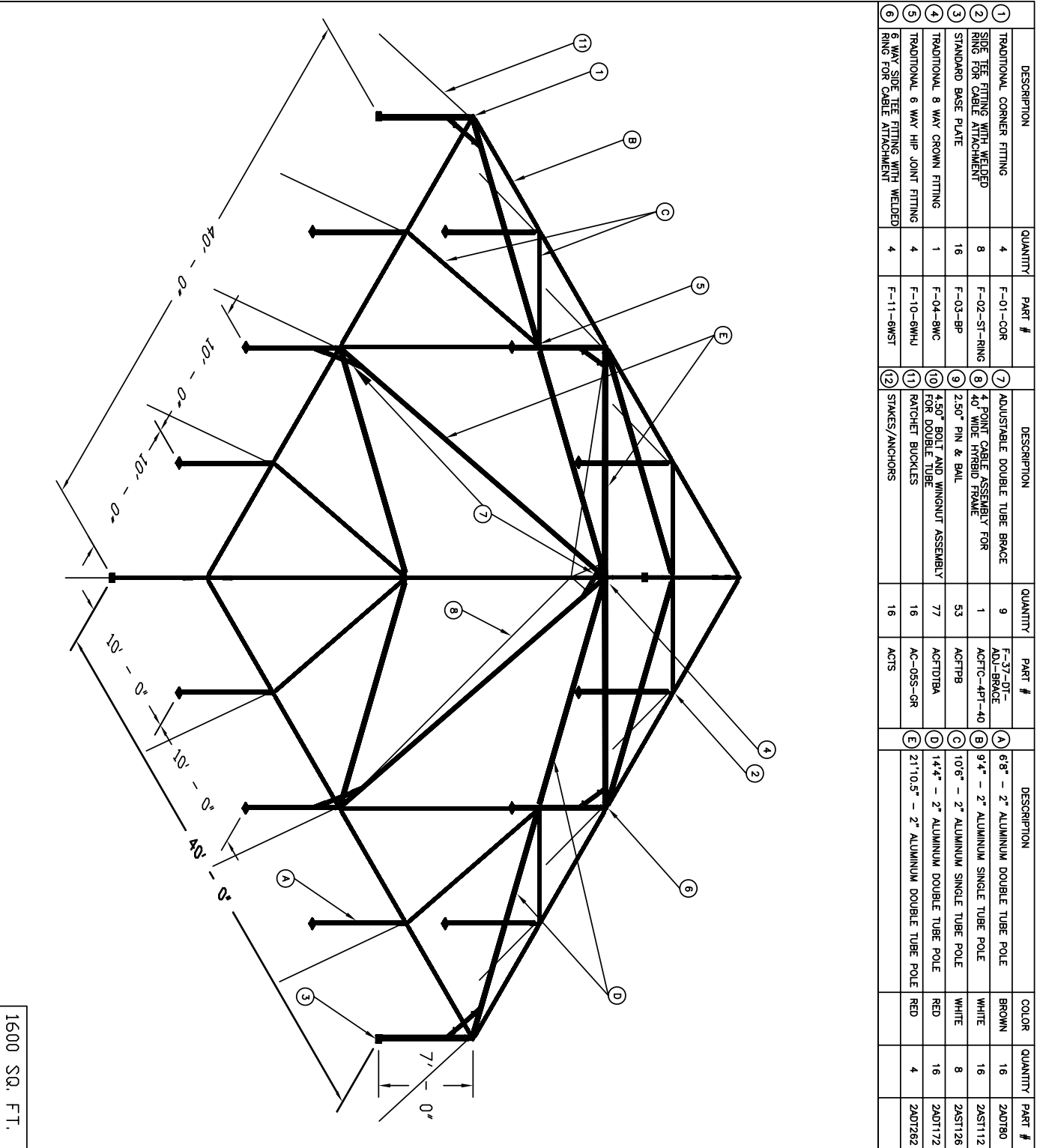


40' x 40' ETS FRAME TENT INSTRUCTIONS



1600 SQ. FT.

DESCRIPTION	QUANTITY	PART #	DESCRIPTION	QUANTITY	PART #	DESCRIPTION	COLOR	QUANTITY	PART #
1 TRADITIONAL CORNER FITTING	4	F-01-COR	7 ADJUSTABLE DOUBLE TUBE BRACE	9	F-37-DT-ADJ-BRACE	A 6'8" - 2" ALUMINUM DOUBLE TUBE POLE	BROWN	16	2A0T80
2 SIDE TEE FITTING WITH WELDED RING FOR CABLE ATTACHMENT	8	F-02-ST-RING	8 4 POINT CABLE ASSEMBLY FOR 40' WIDE HYBRID FRAME	1	ACFTC-4PT-40	B 9'4" - 2" ALUMINUM SINGLE TUBE POLE	WHITE	16	2A0T112
3 STANDARD BASE PLATE	16	F-03-BP	9 2.50" PIN & BALL	53	ACFTPB	C 10'6" - 2" ALUMINUM SINGLE TUBE POLE	WHITE	8	2A0T126
4 TRADITIONAL 8 WAY CROWN FITTING	1	F-04-BWC	10 4.50" BOLT AND WINGNUT ASSEMBLY FOR DOUBLE TUBE	77	ACFTD18A	D 14'4" - 2" ALUMINUM DOUBLE TUBE POLE	RED	16	2A0T172
5 TRADITIONAL 6 WAY HIP JOINT FITTING	4	F-10-6WHJ	11 PATCHER BUCKLES	16	AC-05S-6R	E 21'10.5" - 2" ALUMINUM DOUBLE TUBE POLE	RED	4	2A0T262
6 6 WAY SIDE TEE FITTING WITH WELDED RING FOR CABLE ATTACHMENT	4	F-11-6WST	12 STAKES/ANCHORS	16	ACTS				

40' x 40' ETS FRAME

FIELD INSTALLATION PRINT



PART NUMBER: KIT-ETS040X040X7' CREATED BY: LK DATE: 09-05-06 REVISION #: 0

CELINA TENT, INC./CELINA INDUSTRIES
5373 State Route 29
Celina, Ohio 45822-9210, USA
Telephone: 419-586-3610/1-866-GET-TENT
Fax: 419-584-0949
Website: www.GetTent.com/www.CelinaTent.com
Email: sales@CelinaTent.com

PROPRIETARY INFORMATION
THE DATA AND DETAILS SHOWN IN THIS DRAWING IS PRIVILEGED INFORMATION AND IS THE PROPERTY OF CELINA TENT, INC. ANY USE AND/OR REPRODUCTION OF THIS DRAWING WITHOUT THE EXPRESS WRITTEN CONSENT OF CELINA TENT, INC. IS STRICTLY PROHIBITED.

40' x 40' ETS FRAME TENT INSTRUCTIONS

1. A minimum of 4 people and 3 frame tent jacks are recommended for the proper installation of this tent. Refer to the parts list at the top of the diagram to make sure you received all parts required for proper installation of this tent.
2. The layout begins with the frame parts being positioned on the ground in the approximate location they will be in when the frame is assembled. The perimeter parts are laid out to form the perimeter, and the roof support parts are placed in the interior in their general locations. Laying out the parts in this way facilitates the assembly. (DIAGRAM 40' X 40' Layout)
3. Begin the frame assembly in the middle with the 8 way crowns (DIAGRAM #4). Attach the double tube (DT) RAFTERS (21'10.5" red) to the 8 way crown fitting (MAKE SURE THE ROUND PART OF THE DOUBLE TUBE (DT) SLIDES OVER THE FITTING AND IS INSTALLED SO IT IS ABOVE THE "U" SHAPED PART OF THE TUBE). Each 21'10.5" red rafter tube should form right angles with the other rafter tubes. Each of the four tubes will point toward the center of the 40' sides (DIAGRAM #E) leaving an open slot on the fitting between each 21' 10.5" rafter. Line up the holes in the DT pole with those in the fitting (the hole closest to the center of the fitting should be lined up with the end of the tube, the bolt goes through the hole in the tube and through the hole farthest from the center of the fitting: ALL PINS SHOULD BE FASTENED THROUGH THE HOLE IN THE TUBE AND THE HOLE CLOSEST TO THE OUTSIDE EDGE OF THE FITTING. Bolt the DT rafters to the 8 way crown using a bolt and wing nut. (Install the bolt so that the wing nut is pointed towards the ground to prevent the bolt from puncturing the tent top during installation)
4. Attach a DT HIP rafter (14' 4" red) to the remaining four points of the 8 way crown. These four hip rafters should point toward the corners. (DIAGRAM #D). Secure the tube to the fitting using the same procedure as in step 3 above.
5. Move down one end of the DT hip rafter (14' 4" red) to install a quarter section. Attach the open end of the DT hip rafter tube to a 6 way hip joint fitting (DIAGRAM #5) using BOLT & WING NUT FASTENERS. Attach another DT hip rafter to the opposite end of the fitting to continue down to the corner of the frame. Attach two additional hip rafters (14' 4" red) on opposite sides of the 6 way hip joint so they run perpendicular to the already attached hip rafters. Attach two DT corner rafters (10' 6" green) to the remaining two openings on the 6 way hip joint fitting (DIAGRAM #C). This should complete the first step in installing one quarter section of the frame. Continue over to the other side and install the other three quarter sections starting with the remaining DT hip rafters (14' 4" red) using the same technique as just described. This should complete the frame top (peak) of your tent frame.
6. Locate one of the adjustable double tube braces and use it to connect the two DT rafters (21'10.5" red) located directly under the 8 way crown that you just installed. Place the brace on the DT rafter by aligning the holes in the rafters with that of the brace, attach the brace to the rafters using a SQUARE pin and bail. (The brace should be installed so that the cable brackets on the square brace are pointing toward the ground) Also, secure the brace by placing a SQUARE pin and bail in the adjustment slot located in the center of the brace. The brace should be adjusted to its longest position for this particular application. (DIAGRAM #7). NOTE: This tent is symmetrical so it does not matter which direction this brace is installed.
7. Attach the two shorter cables (3 ft) that are attached to the "O" ring of the 4 point cable assembly to the brackets on the brace just below the 8 way crown fitting. Secure the cables to the brace using the carabineer clips that are attached to the cable assembly. (DIAGRAM #8)
8. The peak part of the frame should now be complete and ready for installation of the side and corner fittings which are connected using perimeter spreader tubes. Start in one corner by attaching a corner fitting using the pin fasteners to the DT hip rafter (14' 4" red) that extends down from the top. The hip rafter should be connected to the center piece of the corner fitting (DIAGRAM #1)

40' x 40' ETS FRAME TENT INSTRUCTIONS

9. Attach a SINGLE TUBE spreader tube (9'4" white) to the remaining slots of the corner fittings. They should be positioned at a right angle from each other and point down the sides of the frame. When installing a SINGLE TUBE spreader to a fitting, always use the ROUND PIN & BAIL FASTENERS. Follow one open end of the spreader tube to where it meets a DT rafter (21' 10.5" red) that extends down from the peak. Connect the tubes using a side tee fitting (DIAGRAM #2). Continue around the perimeter installing the side tee and corner fittings as needed. (REMEMBER: When using any type of pin fastener, make sure the bolt part of the fastener is pointed toward the ground or the inside part of the tent to prevent damage to the vinyl material).

10. Locate the side tees around the perimeter and attach the remaining two longer ends of the 4 point cable assemblies to the rings located on the side tees using the carabineer. Make sure these are installed in correlation with the direction of the brace that was previously installed below the 8 way crown. (DIAGRAM #8)

11. You are now ready to install the tent top. (If installing a multiple piece top refer to "LACING A TENT" at the bottom of these instructions.) Lay a drop cloth (RECOMMENDED ON ALL TENT INSTALLATIONS) out next to the tent frame along one of the sides. Spread the tent top out on the drop cloth making sure the top is facing upward. (An easy way to check is to make sure the sidewall ropes around the perimeter of the tent are face down). Carefully pull the tent over the frame making sure the tent does not drag or stretch across any part of the frame. Use a "flapping" technique to help get the top into place. CAUTION: Dragging, pulling, or sliding the vinyl tent top across the ground, frame, or any other type of surface may cause pin holes in the vinyl top. Celina does not warrant pin hole damage to the vinyl products.

12. Secure the tent top to the frame by fastening the straps on the inside of the tent at each corner location. The strap wraps around the spreader tube and through the alligator clips on the inside of the tent. If weather conditions warrant (wind, rain, etc) you may need to fasten more than just the corners of the top at this time.

13. Before installing the legs to the frame, attach all of the base plates to the legs by sliding the DT leg (6'8" brown or 7'8" black) over the base plate and securing it with a bolt and wing nut. (DIAGRAM #3) (Make sure the head of the bolt is on the outside of the tent and the wing nut is on the inside of the tent to prevent snagging sidewalls during use). Now the tent is ready to be raised.

14. Start along one side by lifting the frame using Frame Tent Jacks so that the DT legs (6'8" brown, or 7'8" black) can slide over the bottom of the corner and side tee fittings. Make sure only one side is erected at a time. Do not lift more than one side at a time to prevent buckling of the tent frame. (Frame Tent Jacks should be used as close to a fitting as possible to prevent damaging the frame) Install all corner and side legs completing the erected side. Fasten the leg to the fitting using a bolt and wing nut. (Make sure the head of the bolt is on the outside of the tent and the wing nut is on the inside of the tent to prevent snagging sidewalls during use.) (DIAGRAM #A)

15. Once one side is completed, use the frame tent jacks to lift the opposite side and install the corner and side legs as in step #13 & #14 above. After the longest two sides have been erected and are free standing, install the remaining side legs.

16. Once all legs are installed, angle a brace between each double tube leg and rafter by lining up the holes on the rafter and brace. Attach the brace to each tube using a SQUARE pin and bail. Use a SQUARE pin and bail in the center adjustment to secure the brace. (At the corners the brace will be adjusted to the shortest position, and at the side tees the brace will be adjusted to the middle position) Repeat until there is a brace between each leg and rafter. (DIAGRAM #7)

17. Now that the frame tent is standing, fasten the tent top completely to the frame using the straps on the inside of the tent. Make sure that all of the straps are tight and the tent top is sitting evenly on the frame. (The 8 way crown fitting should be directly beneath the center of the round or triangular reinforcement patch that has been manufactured into the tent top)

40' x 40' ETS FRAME TENT INSTRUCTIONS

18. Fasten a ratchet strap (rope) to the side tee or corner fitting at each leg location. Drive a 42" steel stake approximately five feet out from each leg. The stake head should be no more than 6" above the surface for proper installation.

19. Attach an anchoring device (ratchets or ropes) to the stakes at each leg location. (DIAGRAM #11)

-Ratchets- turn the 6" loop at the end of the ratchet inside out and pull the strap through the loop to create a noose. Slip the noose over the stake head and pull tight so the knot rests just below the head of the stake. Take the strap from the tent and pull it through the reel bars slot of the ratchet (ratchet buckle needs to have handle facing upward at all time). Pull the strap back towards the tent until all the excess strap is out and it is tight. Hold the strap at this point with one hand and begin to crank the ratchet handle back and forth with the other hand until the reel bars have turned at least 2 times, this eliminates the chance of slippage. Repeat at all leg locations. Make a few rounds to make sure the straps are tightened evenly. Over tightening one side may cause the tent to be uneven.

-Ropes- use a Double Loop Clove Hitch Knot – grip the rope in your left hand approximately 8' down from the perimeter of the tent, at this point, take your right hand and create a loop (approximately 6") with the excess rope and place it in your left hand. Repeat and create another loop and place on the right side of the previous loop (should have 2 and a half loops in your left hand). Take the right loop and pull it up and over so it is now on the left side. Now place both loops over the stake and pull tight with excess rope. Repeat at all leg locations.

20. CONGRATULATIONS!! The tent top should now be complete! If sidewalls are desired, unroll the sidewalls between the stakes and the side legs around the perimeter of the tent. Starting at a side leg, clip the sidewall snap hooks to the rope line that is attached to the interior of the tent top perimeter.

LACING A TENT

If you have a sectional or multiple piece tent top, it needs to be laced together before installation. Lay out all pieces of the tent top so that the grommet sides are next to the lace sides. Begin at the very center of the tent by pulling the first lace up from the bottom through the first grommet. Pull the second lace up through the second grommet. You should now have two laces through two grommets. Take the second lace (closest to you) and loop it up under and through the first lace and pull it back toward you. Bring the third lace up through the third grommet from underneath. Once the third lace is through, loop it up under the second lace and pull it back toward you. Continue this pattern all the way down to the end. Make sure that you connect the rain flap over the laces as you continue down the side of the tent. To do this, connect the clip to the rope that extends down the exterior of the tent top. Once at the end, take the long lace and loop it up under the last two laces and tie it back up to the 4th lace from the bottom. Tie a knot to hold it into place.



If you have any questions, please contact Celina Tents support department at:

support@celinatent.com

1-866-GET-TENT /419-586-3610

www.GetTent.com



CELINA TENT