

# **PTX2000** Heavy Duty Work Bench

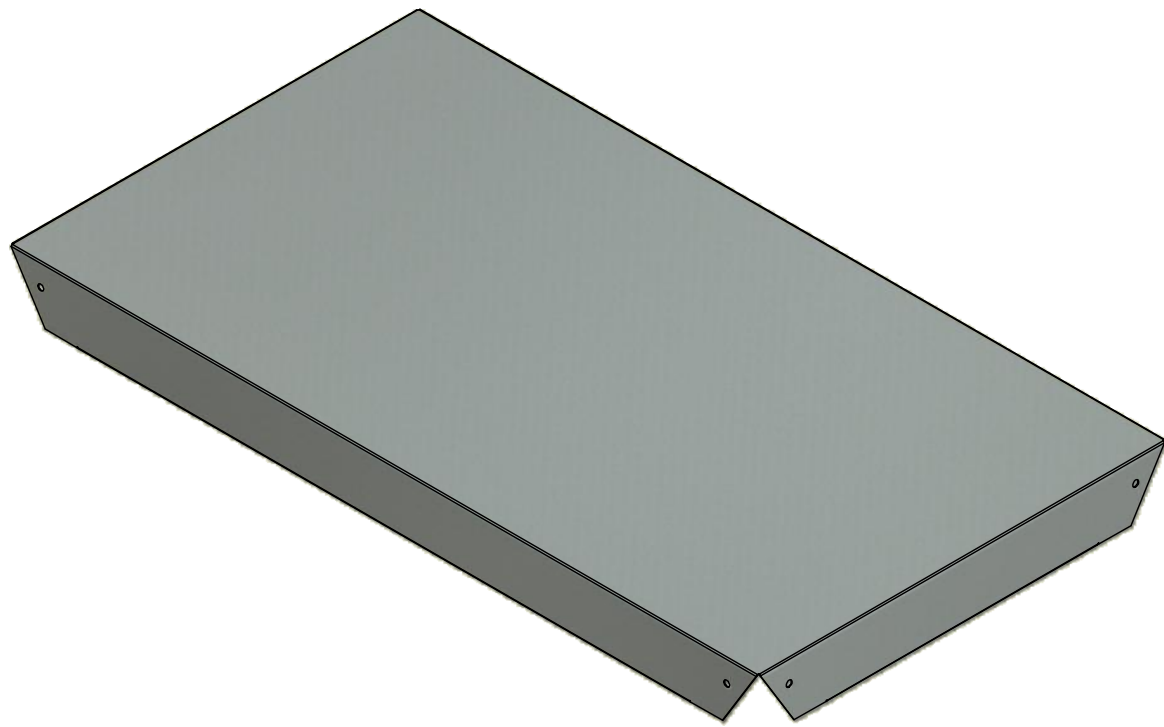
## ASSEMBLY INSTRUCTIONS

### **IMPORTANT**

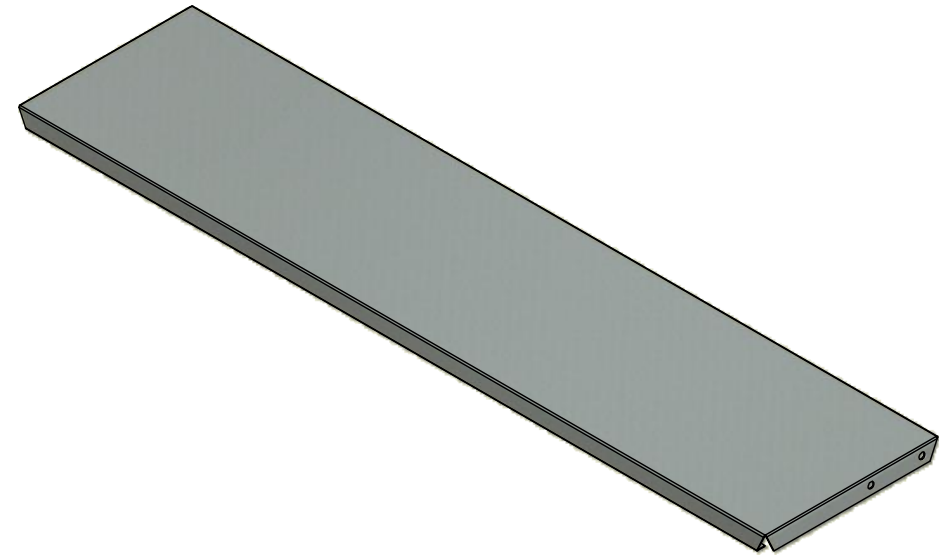
Please read these instructions carefully before beginning to assemble this display. Save instructions for future reference.



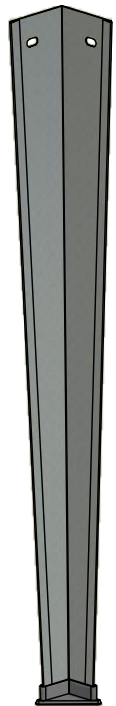
## PARTS IDENTIFICATION



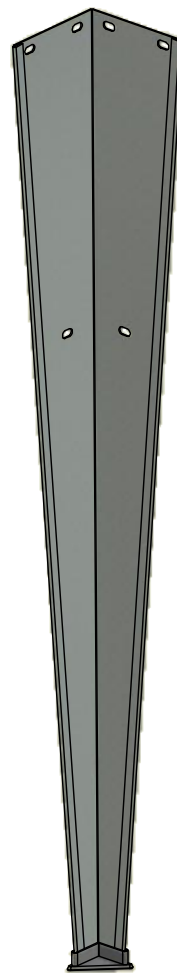
NT1000  
24" x 44" TABLE TOP  
(1)



NT1009  
10" x 44" UPPER SHELF  
(1)



NT1003  
30" LEG  
(2)



NT1013  
43" LEG  
(2)



NB1974  
3/16" HEX WRENCH  
(1)



NB1970  
CAP SCREW  
(12)



NB1862  
LOCK WASHER  
(12)



NB1886  
FLAT WASHER  
(12)

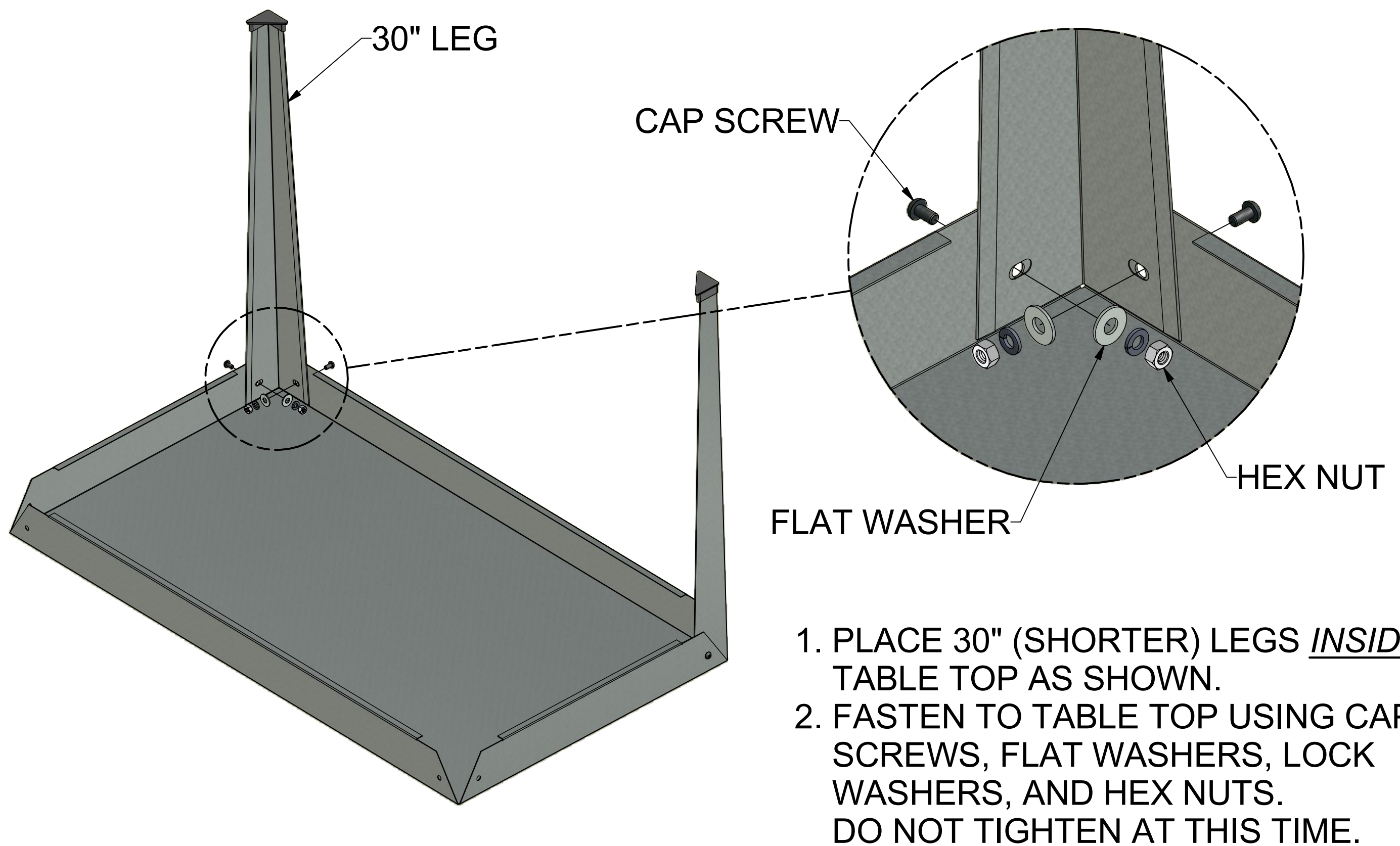


NB1872  
HEX NUT  
(12)

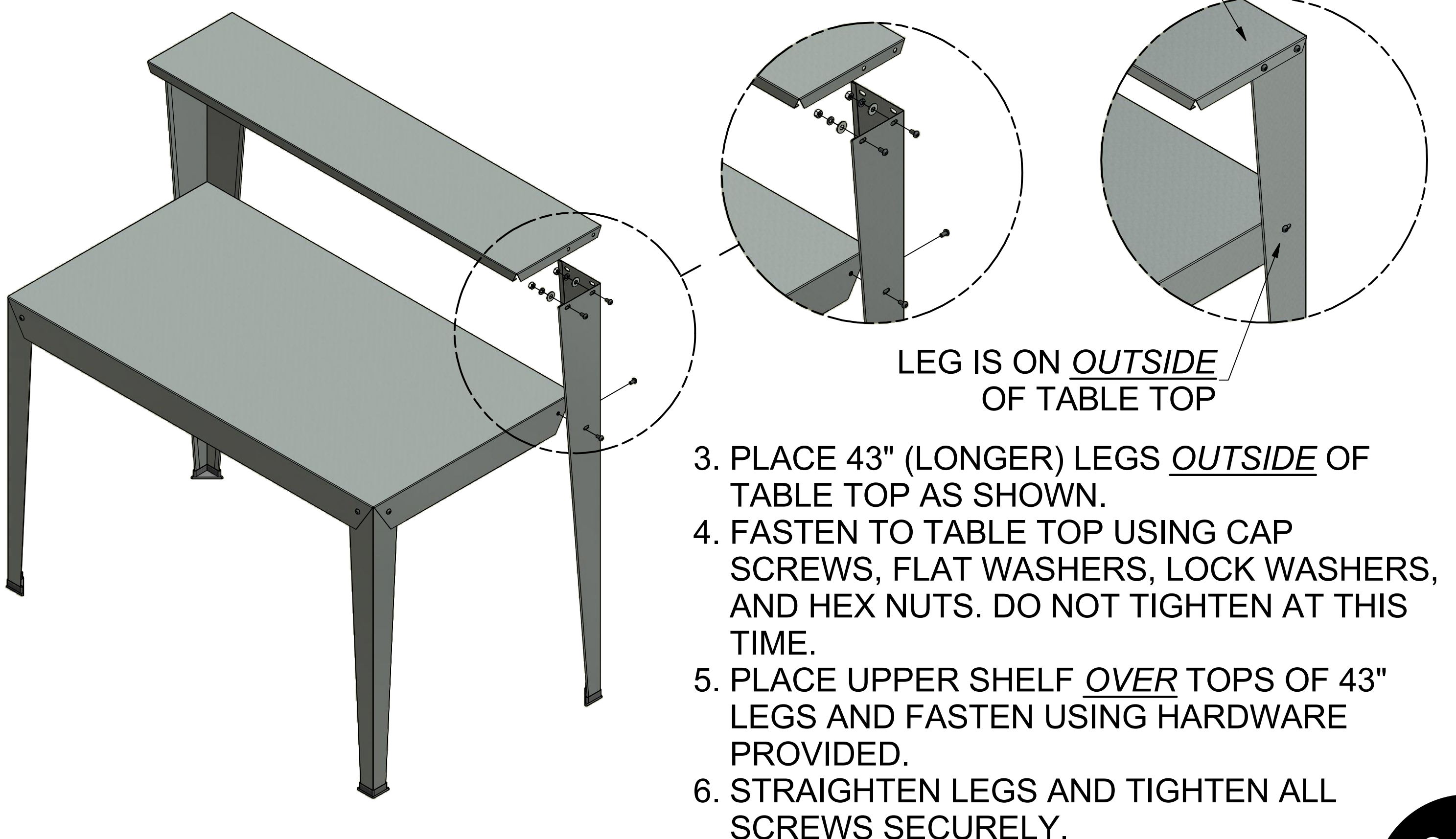
## TOOLS & EQUIPMENT REQUIRED

3/16" hex wrench & 1/2" open-end wrench are required to assemble this product.

# ASSEMBLY INSTRUCTIONS



SHELF IS ON OUTSIDE OF 43" LEGS



## SAFETY GUIDELINES

**Do not** climb, sit on, or use this product as a ladder. Injuries may occur.

**Do not** place or install electrical items on this product. Wet conditions are typical and electrical shock may occur.

**Do not** place this product on a slope that exceeds 3 degrees.

## CARE & MAINTENANCE

To clean, use a clean damp cloth to wipe off dirt and debris.

### Limited Warranty

Poly-Tex, Inc. warrants its products to be free from defects in material and workmanship for a period of (1) year from date of invoice. This warranty is provided to the original purchaser of the product and is not transferable. Poly-Tex does not warrant parts not manufactured by Poly-Tex, but does assign any transferable manufacturer or supplier warranties. Should any defect be found, full repair or replacement will be rendered to the customer at no cost following inspection by a Poly-Tex representative and the return of the defective product to our Castle Rock, MN factory. Expenses for removal or reinstallation of defective products will not be covered by the warranty.

**POLY-TEX SHALL NOT BE HELD RESPONSIBLE FOR ANY SPECIAL OR CONSEQUENTIAL DAMAGES, OR FOR ANY DELAY IN PERFORMANCE OF THIS WARRANTY BEYOND OUR CONTROL. THIS WARRANTY IS EXCLUSIVE AND IN LIEU OF ALL OTHER WARRANTIES WHETHER IMPLIED, WRITTEN OR ORAL INCLUDING THE WARRANTIES OF MERCHANTABILITY AND FITNESS FOR A PARTICULAR PURPOSE.**

This warranty does not cover damage from customer abuse, misuse, improper installation, customer modifications, customer negligence in performing normal maintenance, damage resulting from acts of nature.

Poly-Tex, Inc.  
9601 Newton Avenue South, Suite A  
Bloomington, MN 55431  
Toll free (844) 822-7009  
[www.poly-tex.com](http://www.poly-tex.com)