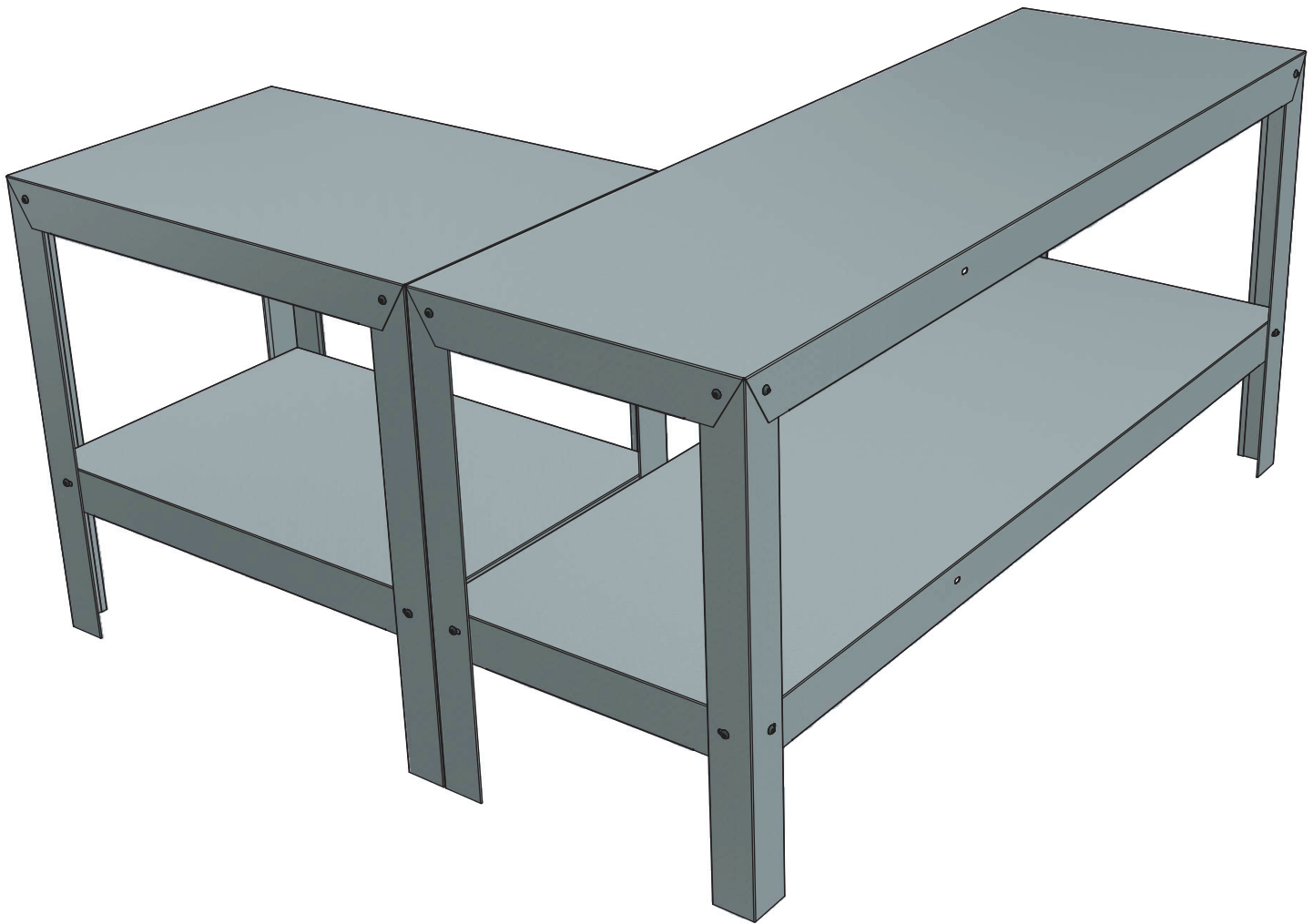


# PTX8000 / PTX8001 / PTX8100

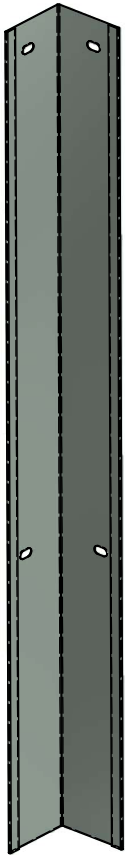
Heavy Duty Utility Table – 36" , 72" and Combo Kit  
ASSEMBLY INSTRUCTIONS

## IMPORTANT

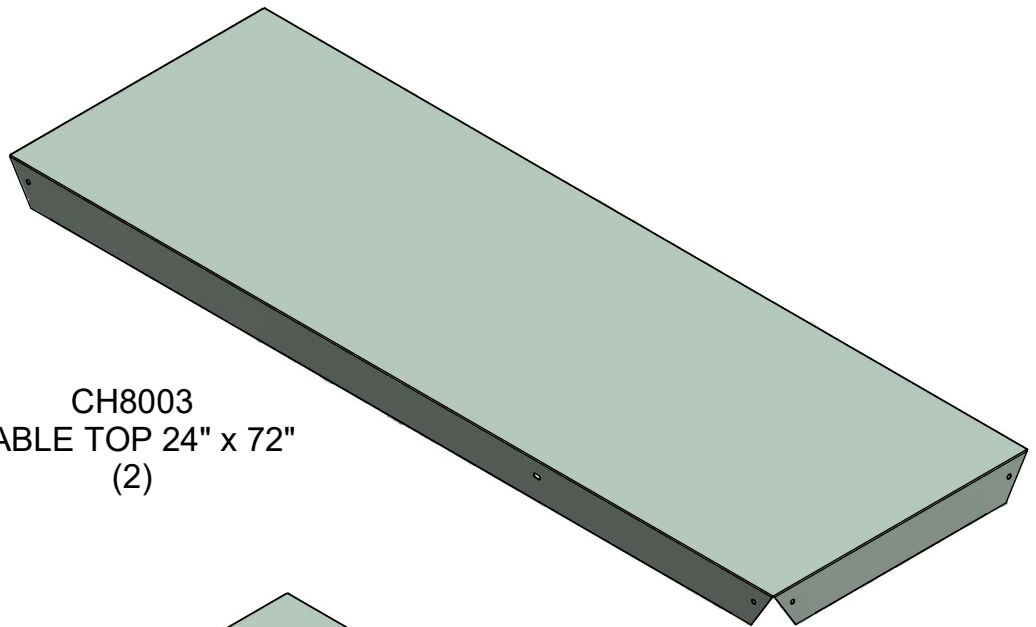
Please read these instructions carefully before beginning to assemble this display. Save instructions for future reference.



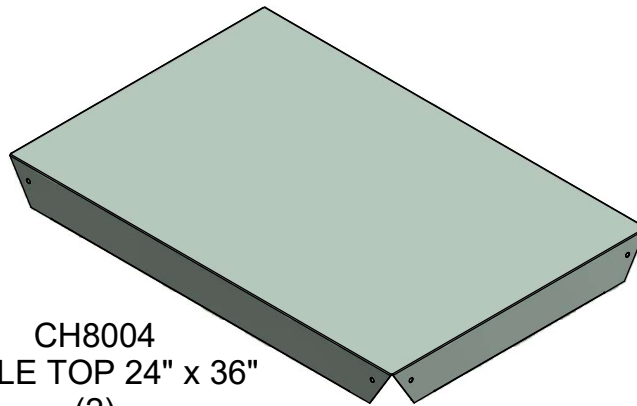
## PARTS IDENTIFICATION



CH8002  
TABLE LEG 34"



CH8003  
TABLE TOP 24" x 72"  
(2)



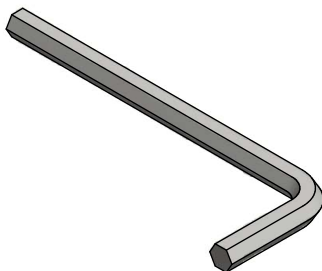
CH8004  
TABLE TOP 24" x 36"  
(2)



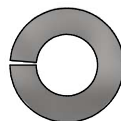
NB1970  
5/16-18 x 3/4" BUTTON  
HEAD CAP SCREW



NB1872  
5/16" HEX NUT



NB1974  
3/16" WRENCH HEX  
(1)



5/16" LOCK WASHER



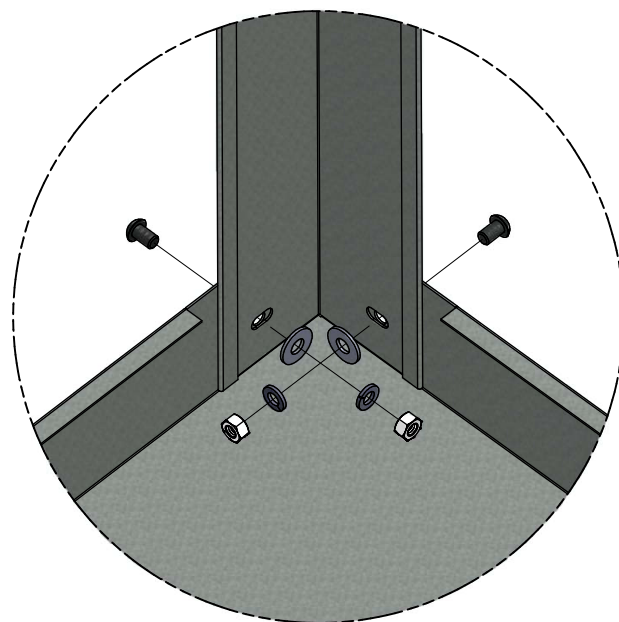
5/16" FLAT WASHER

## TOOLS & EQUIPMENT REQUIRED

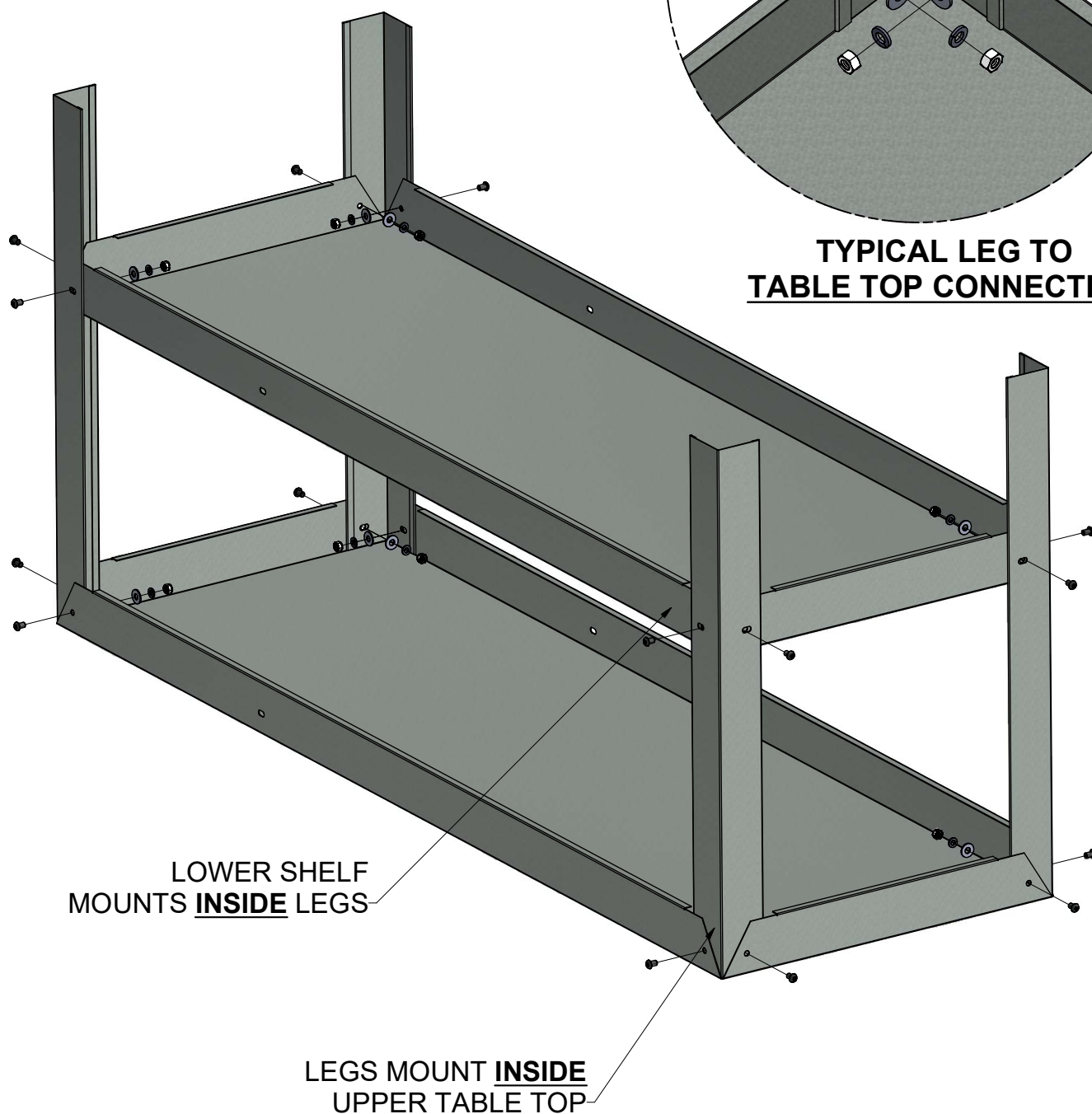
A 3/16" hex wrench (provided) and a 1/2" open end (or adjustable) wrench are required for assembly.

# ASSEMBLY INSTRUCTIONS CH8000

CH8002 - 4  
NB1970 - 16  
NB1886 - 16  
NB1862 - 16  
NB1872 - 16



**TYPICAL LEG TO  
TABLE TOP CONNECTION**

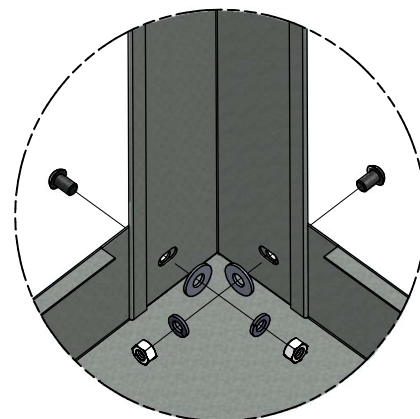


LOWER SHELF  
MOUNTS **INSIDE** LEGS

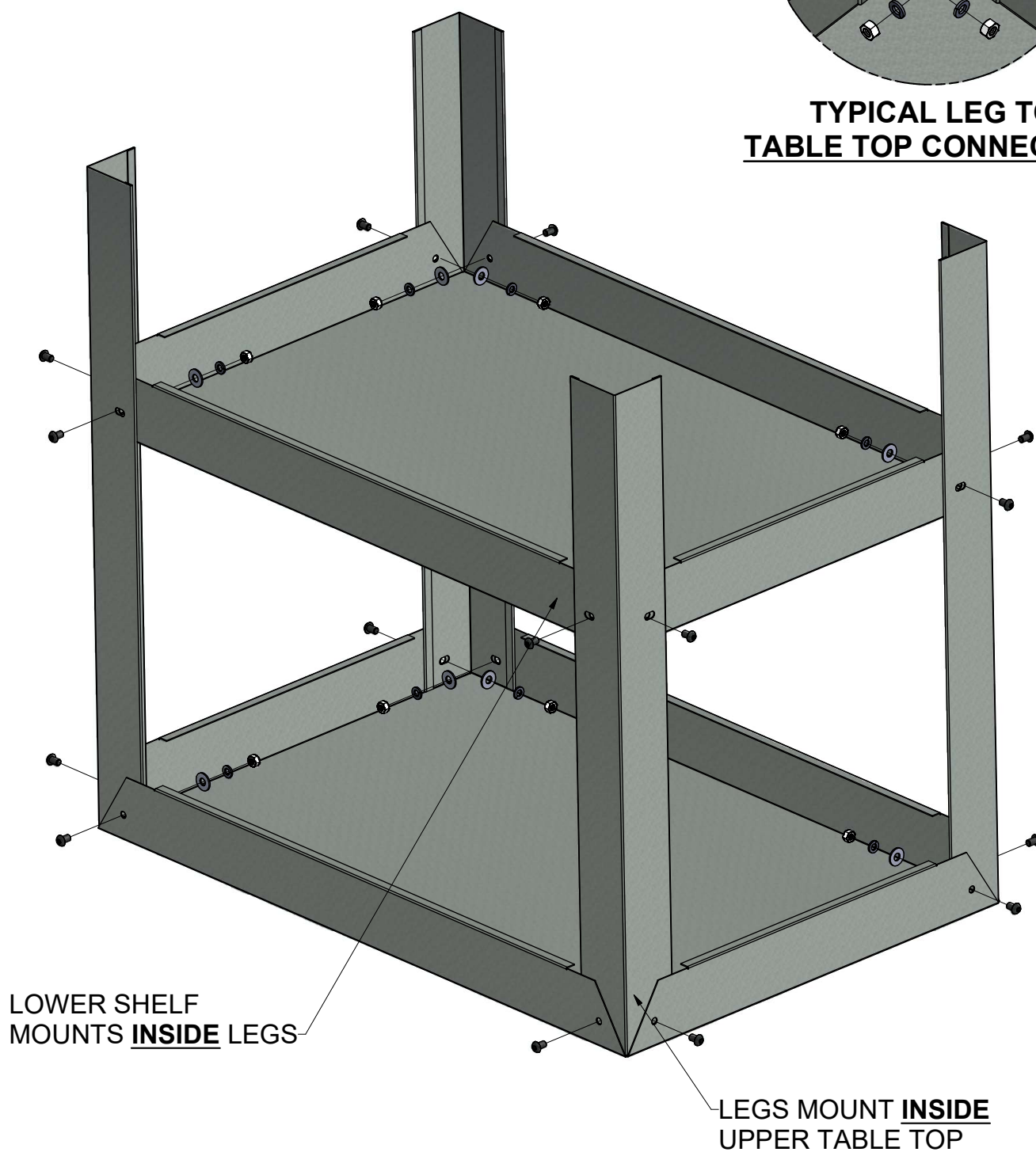
LEGS MOUNT **INSIDE**  
UPPER TABLE TOP

# ASSEMBLY INSTRUCTIONS CH8001

CH8002 - 4  
NB1970 - 16  
NB1886 - 16  
NB1862 - 16  
NB1872 - 16



**TYPICAL LEG TO  
TABLE TOP CONNECTION**



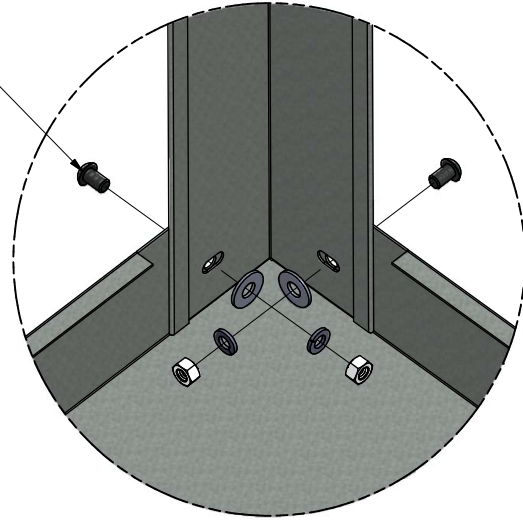
LOWER SHELF  
MOUNTS INSIDE LEGS

LEGS MOUNT INSIDE  
UPPER TABLE TOP

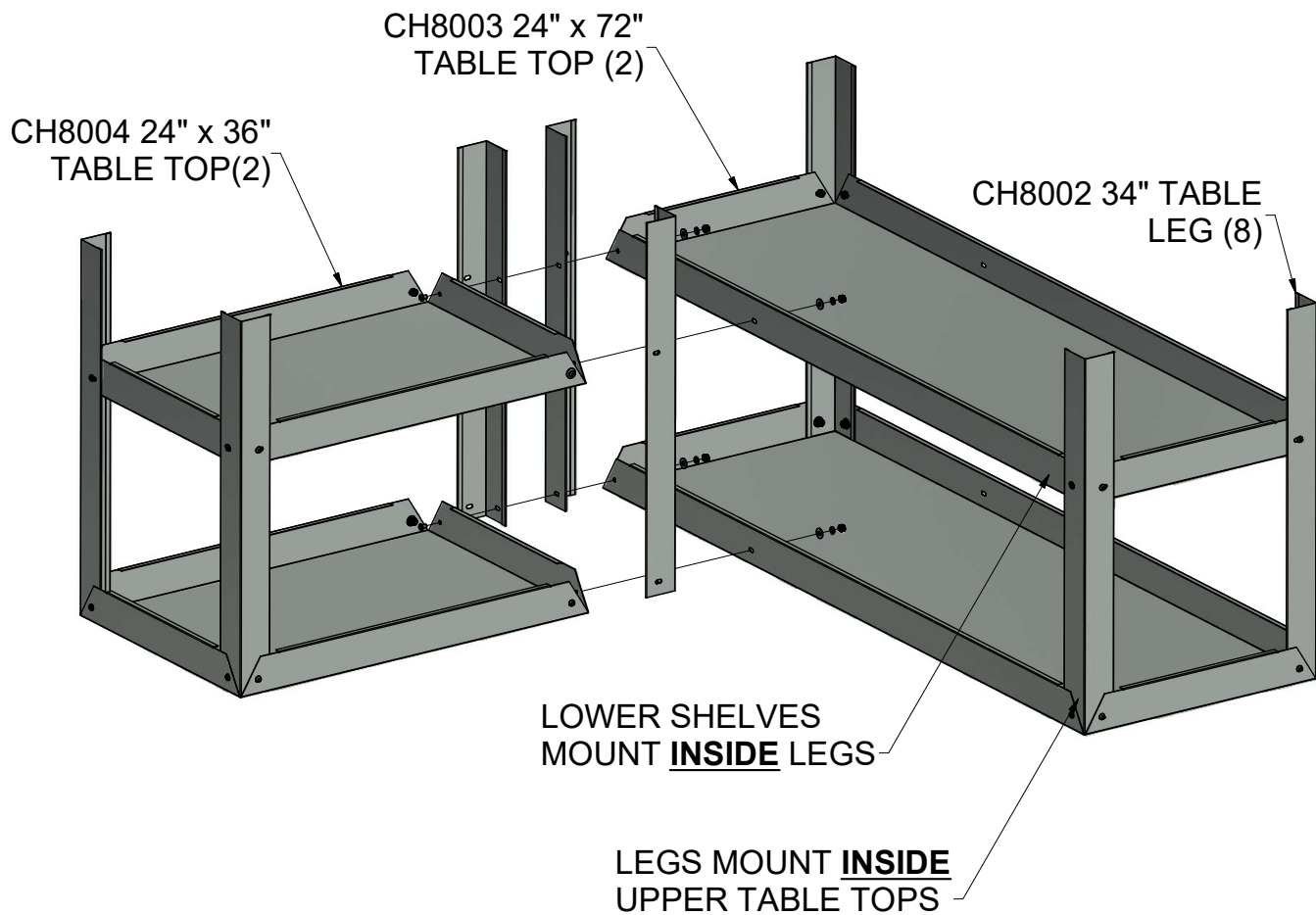
# ASSEMBLY INSTRUCTIONS CH8100

CH8002 - 8  
NB1970 - 28  
NB1886 - 28  
NB1862 - 28  
NB1872 - 28

PLACE LEGS  
**INSIDE** UPPER  
TABLE TOPS



## **TYPICAL LEG TO TABLE TOP CONNECTION**



## SAFETY GUIDELINES

**Do not** climb, sit on, or use this product as a ladder. Injuries may occur.

**Do not** place or install electrical items on this product. Wet conditions are typical and electrical shock may occur.

**Do not** place this product on a slope that exceeds 3 degrees.

## CARE & MAINTENANCE

To clean, use a clean damp cloth to wipe off dirt and debris.

### Limited Warranty

Poly-Tex, Inc. warrants its products to be free from defects in material and workmanship for a period of (1) year from date of invoice. This warranty is provided to the original purchaser of the product and is not transferable. Poly-Tex does not warrant parts not manufactured by Poly-Tex, but does assign any transferable manufacturer or supplier warranties. Should any defect be found, full repair or replacement will be rendered to the customer at no cost following inspection by a Poly-Tex representative and the return of the defective product to our Castle Rock, MN factory. Expenses for removal or reinstallation of defective products will not be covered by the warranty.

POLY-TEX SHALL NOT BE HELD RESPONSIBLE FOR ANY SPECIAL OR CONSEQUENTIAL DAMAGES, OR FOR ANY DELAY IN PERFORMANCE OF THIS WARRANTY BEYOND OUR CONTROL. THIS WARRANTY IS EXCLUSIVE AND IN LIEU OF ALL OTHER WARRANTIES WHETHER IMPLIED, WRITTEN OR ORAL INCLUDING THE WARRANTIES OF MERCHANTABILITY AND FITNESS FOR A PARTICULAR PURPOSE.

This warranty does not cover damage from customer abuse, misuse, improper installation, customer modifications, customer negligence in performing normal maintenance, damage resulting from acts of nature.

Poly-Tex, Inc.  
9601 Newton Avenue South, Suite A  
Bloomington, MN 55431  
Toll free (844) 822-7009  
[www.poly-tex.com](http://www.poly-tex.com)