

## Your Pop Up Shop Wherever You Stop



Ins'Tent introduces a **Portable Shop 10'x10' Vendor Tent Kit** that is ideal for art & craft fairs, food festivals and farmers markets.

It features a commercial steel frame with powder coated finishing for rust-free protection and a high-quality presentation. The top, walls, and awning are 300 Denier polyester with PU coating making it UV resistant, water repellent, and CPAI-84 fire retardant certified.

This Vendor Tent Kit is the only one on the market to offer a banner sleeve, giving you the option to insert your own custom branded banner.



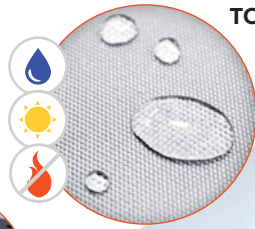
**AWNING**  
with 2 adjustable positions.



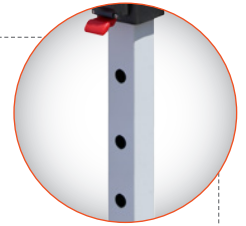
**ATTACHABLE BANNER SLEEVE**  
with hook and loops to connect to your top so you can easily insert a custom banner\* with your logo.

\* banner insert not included

# PRODUCT FEATURES



**TOP AND WALL MATERIAL:**  
300 Denier Polyester (Water Repellant, UV Resistant, CPAI-84 Certified).

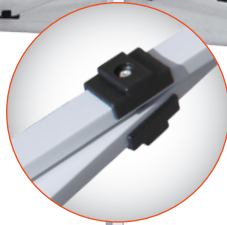


**5 HEIGHT ADJUSTMENTS**

**Reinforced ABS FITTINGS** for longer durability and support to the frame.



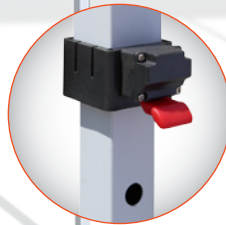
**Reinforced TRUSS BARS** for extra support to the frame.



**Hook & loop STRAPS** to secure your top to your tent and keep it stable.



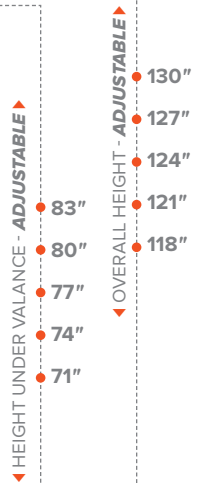
**32mm LEG DIAMETER**  
Offers stability and support to withstand variable weather conditions.



**THUMB LATCHES** on sliders for faster, easier height adjustment.



**10'x10' COMMERCIAL GRADE STEEL FRAME** that is ideal for any budget.



# PRODUCT SPECIFICATIONS & SHIPPING INFORMATION

## PRODUCT SPECIFICATIONS

PRODUCT	DIMENSIONS	WEIGHT
Tent (Top+Frame)	116"(L) x 116"(W) x 118"-130"(H) (deployed) 13"(L) x 13"(W) x 62"(H) (folded)	56 lbs.
Wall	116"(L) x 80"(H)	2 lbs.
Mesh Wall	116"(L) x 80"(H) Serving Windows size 18"(L) x 22"(H)	2 lbs.
Banner Sleeve	109"(L) x 14"(H)	2 lbs.
Awning	116"(L) x 32"(H)	6 lbs.

## SHIPPING INFORMATION

PRODUCT	BOX DIMENSIONS	WEIGHT
Box 1: Frame	63"(L) x 10"(W) x 10"(H)	50 lbs.
Box 2: Top + Rollerbag + Stake Kit + Banner Sleeve	35"(L) x 15"(W) x 4" (H)	16 lbs.
Box 3A: Wall Set (3 Plain Walls + 1 Wall with Zipper Door)	15"(L) x 13"(W) x 5" (H)	10 lbs.
Box 3B: Food Vendor Kit Walls (3 Mesh Walls with Serving Windows + 1 Mesh Wall with Middle Zipper Door)	22"(L) x 15"(W) x 5" (H)	9 lbs.
Box 4: Awning Kit	46"(L) x 8"(W) x 2" (H)	7 lbs.
Box 5: Full Vendor Kit	50"(L) x 15"(W) x 7" (H)	36 lbs.